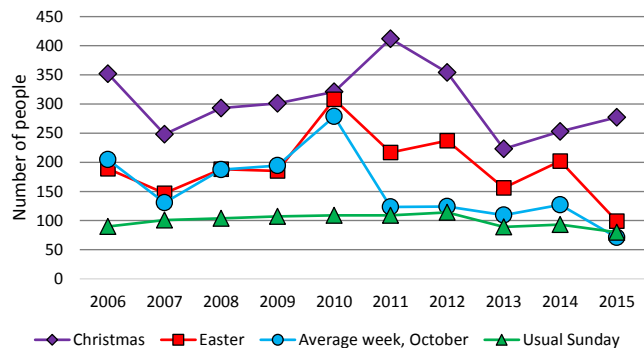
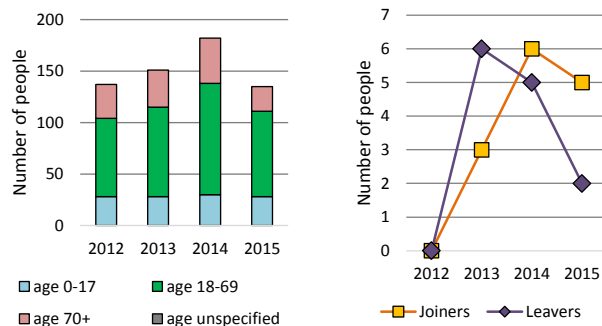


Dashboard for the benefice of Berkeley w Wick, Breadstone, Newport, Stone, Woodf in the Deanery of Wotton

1. Attendance summary, 2006-15



2. Worshipping community, 2012-2015



Benefice census summary

Benefice population (2011): 3935

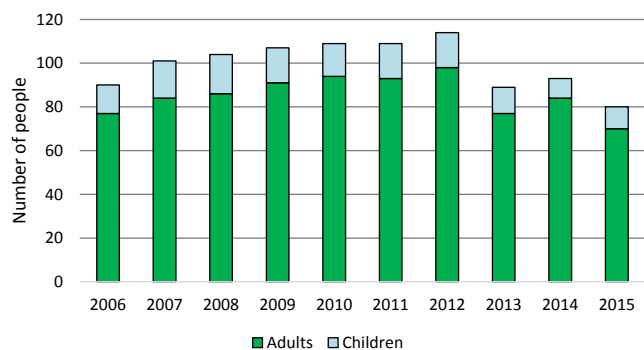
	Benefice	Diocese	National
% aged 0-17	19%	20%	21%
% aged 18-44	29%	33%	37%
% aged 45-64	31%	28%	25%
% aged 65 & over	20%	19%	16%
% Christian	69%	64%	59%
% non-Christian religion	1%	2%	9%

For more detailed census information see <http://arcg.is/1RaS4CS>
<https://www.churchofengland.org/about-us/facts-stats/research-statistics.aspx>

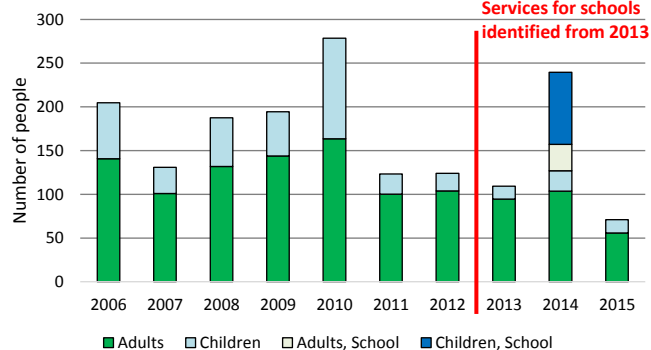
Number of churches in benefice (2016): 3
 Number of parishes in benefice (2016): 3

Benefice code: 16/020BK

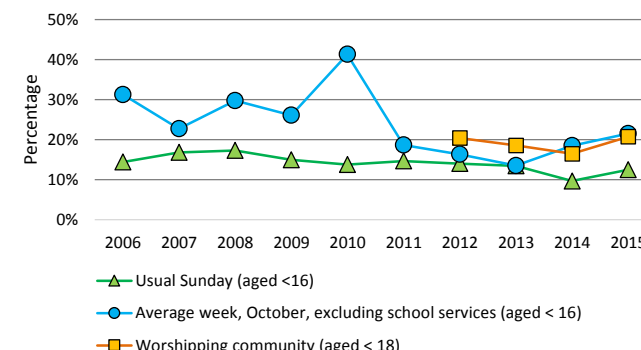
3. Usual Sunday attendance, 2006-15



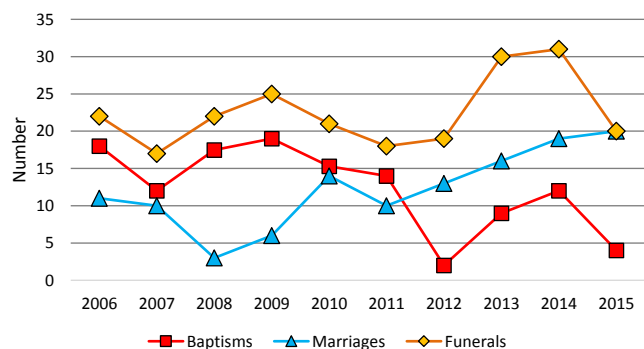
4. Average weekly attendance, October, 2006-15



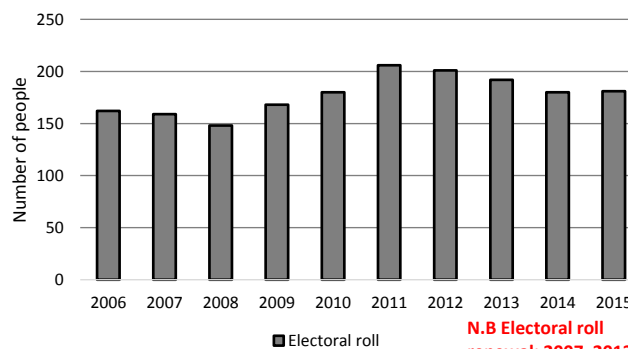
5. Percentage children, 2006-15



6. Baptisms, marriages, & funerals, 2006-15



7. Electoral roll, 2006-15



This dashboard contains figures as submitted by churches currently in the benefice

Attendance statistics have been taken from annual Statistics for Mission returns. Average weekly attendance: attendance at Sunday and midweek church services & fresh expressions in October; Figs 1 & 5 do not include attendance at services for schools. Easter: Easter Eve & Easter Day; Christmas: Christmas Eve & Christmas Day. Baptisms: all baptisms & thanksgivings. Marriages: marriages and services of prayer & dedication after civil marriages. Funerals: those held in church & at crematoria/cemeteries. Worshipping Community information has been collected from 2012 onwards. **Census data** taken from the 2011 national Census.

The above statistics have been mapped onto benefice boundaries so are approximations. For more information, see: <https://www.churchofengland.org/about-us/facts-stats/research-statistics.aspx>

Variations in attendance from year to year may be the result of changes in the number of churches that submitted returns, or changes in parish/benefice structure.

Number of churches included in submitted returns: 2006 3; 2007 4; 2008 4; 2009 3; 2010 3; 2011 3; 2012 3; 2013 2; 2014 3; 2015 2.

Produced by the Research and Statistics Unit, Church House, Great Smith Street, London SW1P 3AZ. Date of production: 31/1/17

Every effort has been made to ensure that data are reliable. We would be grateful to be notified of any significant errors or omissions by email to statistics.unit@churchofengland.org



Follow us on Twitter:
@cofestats



Research and Statistics