



Resourcing Ministry

Supporting ministers, teams and worshipping
communities

Please refer to the Developing Ministry brochure for
scheduled training and development opportunities



Dear Colleagues,

Across the Department of Mission and Ministry we are developing an increasingly varied programme to support the different strands of our diocesan LIFE vision. This brochure highlights different opportunities for us all to develop, learn and grow in ministry. Much of it is delivered locally, with a focus on mission, enabling discipleship and growing teams of people so that together, we may all be better equipped to go out and share the transforming Gospel of Jesus Christ.

If you want to know more, please do contact the department. We are here to support you and to resource the worshipping communities of our diocese. Contact information is provided at the end of each section.

The Revd Canon Dr Andrew Braddock
Director of Mission and Ministry

Resource Sections

	Page
Children and Families	3
Mission and Engagement	5
Pastoral Ministry	7
Vocation	9
Worship and Preaching	10
Faith and Spirituality	11
Support and Development	12
More Resources and Who to Contact	14

CHILDREN AND FAMILIES

- ◆ **It's a Christening**
- ◆ **Prayer Spaces**
- ◆ **Children and Bereavement**
- ◆ **Seeking Shapes for Living as a Household**

It's a Christening

Gather as a church or benefice team for a two-hour facilitated session to reflect on engagement with baptism families, celebrate what you already do and explore new possibilities. The session, similar to the workshops offered to PCC's in 2018, also covers;

Making the most of the national christening resources

Hospitality - how does it compare to Jesus' hospitality

Enabling others to get involved and use their creativity

Practical ways to maintain relationships with christening families

Good news stories about how initiatives are working in parishes across this diocese.

Contact Jo Wetherall for further information.

Prayer Spaces

Prayer Spaces inspire a sense of awe and wonder and encourage development of the non-material aspect of human nature, sometimes called the spirit or soul. Within a prayer space are activities which are easy to engage with and flexible. You can create prayer spaces around themes and seasons, around stories (eg Jesus' parables, Abraham, The Garden of Eden, the Lord's Prayer) or adapt them to fit with other prayer models (eg a seed trail, a labyrinth). Prayer spaces can be set up in a variety of places, not just in church or school.

Contact Jo Wetherall for further information and equipment you can borrow.



Children and Bereavement

Every 13 minutes a child somewhere in the UK experiences a significant bereavement; for 1 in 30 children that is the death of a parent which equates to one child in every class in school.

For anyone engaging with children and families this two-hour session covers:

Understanding on how children grieve.

Ideas on how to support them.

How to talk about death with children outside of a bereavement.

Exploring death through play and stories.

Contact Jo Wetherall for further information.



Seeking Shapes for Living as a Household

Seeking Shapes for Living allows whole households to journey together and gently explore what it means for each of us to follow Jesus with our whole lives. It provides a simple structure and prepared activities over five weeks, you choose where and when it fits the shape of your family life.

Using the themes of relating, praying, working, playing and growing it can be used at any time and the prayers become part of your regular family devotions.

Seeking Shapes for Living is inspired by St Benedict, a Christian living in Italy in the dark ages, who wrote some simple and practical guidelines to help people develop their Christian life giving it shape and support within the challenges and choices of every day life. Download families resources from the diocesan website.

Contact Jo Wetherall for further information.

Advisor - Children and Families

The Revd Jo Wetherall - jwetherall@glosdioc.org.uk 01452 835552

- ◆ Messy Church
- ◆ Worshipping with children
- ◆ Faith at home
- ◆ Beginning ministry with children and households
- ◆ Admission of baptised children to Holy Communion
- ◆ Employing a children's ministry worker
- ◆ Toddler groups/toddler church
- ◆ Godly Play
- ◆ Children's spirituality
- ◆ Parish/school relationship

MISSION AND ENGAGEMENT

- ◆ **Mission Shaped Learning Opportunities**
- ◆ **Learning Communities**

Mission Shaped Learning Opportunities

Mission shaped ministry (msm) and mission shaped intro (msi) are two resources available via the department. Both are nationally developed resources from the Fresh Expressions team. They are a fabulous way to explore various questions around contemporary mission such as, 'why what used to work doesn't any more', and 'what approaches might be helpful instead'.

msi: This can be run locally on request, as a partnership between the department and a local deanery, benefice, church or ecumenical group. It is a short course that runs over five or six sessions that is a great introduction to the issues.

msm: This course goes into greater depth and is particularly valued by groups attending together as they begin to work on a project, and individuals exploring God's calling for them personally.

Contact Cate Williams for further information.



Learning Communities

THRIVE, FLOURISH and LEAD ACADEMY

These three learning communities enable groups from a wide variety of worshipping communities to meet, learn and grow together over a period of around two years. Meeting every six months for a couple of days, participants learn from one another as well as from the course materials.

In between sessions they return to their contexts ready to put their vision and learning into practice. Groups are always clergy and lay together. Each course covers structure, leadership, discipleship and mission but with a different focus:

Thrive – a focus on developing multi-parish ministry

Flourish – a focus on enabling Saturday to Sunday discipleship

Lead Academy – a focus on leadership in larger congregations (of 100+)

Contact Andrew Braddock or Pauline Godfrey if you would like to know more about these courses and discover which would suit your context best.

Community Engagement

From the diocese's partnership with the Barnwood Trust a toolkit for churches is being developed based on the principles of Asset Based Community Development (ABCD). This provides practical tools alongside theological reflection on how this approach meshes with God's mission. ABCD encourages partnership with other charities, agencies and community members, enabling significant impact on the wellbeing of communities without churches becoming overstretched through trying to do it all alone. Visits can be arranged to churches, benefices or deaneries in order to explore the possibilities this opens up.

Contact Cate Williams for further information.

Advisors - Mission and Engagement

The Revd Cate Williams - cwilliams@glosdioc.org.uk 01452 835543

- ◆ Community engagement and partnership working
- ◆ Social responsibility and inclusion
- ◆ FestivALL - multi-agency partnerships celebrating/creating diverse communities.

The Revd Canon Pauline Godfrey - pgodfrey@glosdioc.org.uk 01452 835548

- ◆ Learning Communities - Thrive, Flourish and Lead Academy

The Revd Canon Dr Andrew Braddock - abraddock@glosdioc.org.uk
01452 835549

- ◆ Learning Communities - Thrive, Flourish and Lead Academy

PASTORAL MINISTRY

- ◆ **Lay Funeral Ministers**
- ◆ **Healing and Wholeness**
- ◆ **ACCORD**
- ◆ **Pastoral Assistant Training**

Lay Funeral Ministers

This new course equips people with the skills and knowledge required to carry out effective Funeral Ministry. The diocese seeks to enable people, across the diocese, to carry out a recognised and high standard of funeral ministry in their locality. Those already involved with taking funerals, as well as those feeling called to this ministry for the first time, are encouraged to attend the course. Upon successful completion of the course a licence is granted.

This six-session course is for those recommended by their incumbent and supported by their PCC who feel called to this very special ministry.

Training includes the changing face of funerals, the theology of death and resurrection and dealing with grief, listening and communication, beginning to build a service, and leading the funeral – initially shared and observed.

Potential Lay Funeral Ministers are required to follow diocesan safeguarding policies and procedures.

Contact Mike Smith for further information (details over page).

Healing and Wholeness

This course suits new prayer ministry teams and can be delivered as a shorter refresher course for existing teams. It aims to help Christians learn about the healing ministry and to apply the learning in their local church.

Six sessions of two hours cover biblical teaching, emotional healing, practical application, safeguarding and more. Equipped with knowledge and skills people gain confidence in sharing this ministry.

Tutors can visit to discuss your parish/benefice needs. The course, created by the Acorn Christian Foundation, has been adapted and approved for this diocese.

Contact Sheila Appleton for further information (details over page).

Pastoral Care Training (delivered by ACCORD)

The team provides training and encouragement for lay people in the skills needed to share the pastoral care work of a parish or benefice. The focus of courses is practical rather than theological, building on the gifts and skills people already have. Training is delivered locally over two or three short sessions or a single day. Courses are suitable for churches with established pastoral teams and those just getting going with a pastoral team. Courses currently offered are:

- Visiting and Befriending
- Supporting the Bereaved
- Listening Skills
- Conversation with the Dying
- Marriage Preparation

Contact Victoria Braddock for further information.



Pastoral Assistant

Pastoral Assistants are lay people who take a formational journey at the end of which they are equipped to handle different situations confidently with some theological understanding. They are recognised by the diocese, and commissioned to work in their parishes in areas of ministry which might include visiting sick and elderly, preparation for baptism and weddings, bereavement follow-up. Training covers theories of bereavement and listening, along with best practice and the application of skills, including diocesan safeguarding training.

Contact Pauline Godfrey for further information.

Advisors - Pastoral Ministry

The Revd Mike Smith - gloucesterfunerals@glosdioc.org.uk 07840 260182

- ◆ Lay Funeral Ministers course

The Revd Canon Pauline Godfrey - pgodfrey@glosdioc.org.uk 01452 835548

- ◆ Training and support for Pastoral Assistants

Sheila Appleton - appletonsma733@gmail.com 07946 723851

- ◆ Ministry for Healing and Wholeness

Victoria Braddock - accord@glosdioc.org.uk 01452 835546

- ◆ ACCORD pastoral care training

VOCATION

◆ SHAPE

YOUR SHAPE FOR GOD'S SERVICE

This six-session course is designed for use by all kinds of churches, including small ones whose members are not confident about having anything spiritual to offer.

Your Shape for God's Service aims to enable people to understand the unique SHAPE God has made them, and how he might want to use them. This will involve looking at your: **S**piritual gifts (God's unique gifts to you); **H**eart's Desire (what motivates and excites you); **A**bilities (your talents, knowledge and skills); **P**ersonality (your character, qualities and strengths) and **E**xperiences (what you have gained from your life experiences).

Your Shape for God's Service can be used with a small group of interested people, or an existing home group.

The materials, from September 2019, will be available to freely download. With full instructions they are simple, flexible and can be adapted to suit the context. Also the course is offered centrally, led by the vocations team.

Contact Pauline Godfrey for further information.

Advisors - Vocation

The Revd Canon Pauline Godfrey - pgodfrey@glosdioc.org.uk 01452 835548

- ◆ General exploration of Christian vocation

The Revd Ann Sargent - asargent@glosdioc.org.uk 01452 835547

- ◆ Vocation to licenced ministry
- ◆ Ordinations

The Revd Sam Norton - snorton@glosdioc.org.uk 01452 835566

- ◆ Vocation to ordained ministry
- ◆ General exploration of Christian vocation
- ◆ Local Vocations Advisor

WORSHIP AND PREACHING

◆ Leading Worship Course

Leading Worship Course

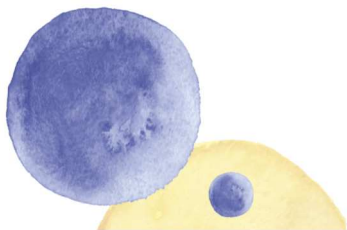
This six-session course trains lay people to lead worship and be valuable members of worship teams.

'Worship Leaders' are lay people with formal training and permission to lead Services of the Word (ie services which are non-Eucharist), usually where they worship on a regular basis. They may also lead all-age worship. Worship Leaders can lead a Sunday service where otherwise there may not be one. Whilst they are not authorised to preach, they are able to offer an alternative.

This ministry is a response to God's call. For some people becoming a Worship Leader is a stepping stone in discovering where God wants them to be. For others is it a natural way for them to enable the ministry in their parish to continue.

Where several people in a benefice wish to train, the course can be delivered to that group.

Contact Julie Fay for further information.



Advisor - Worship and Preaching

Canon Dr Julie Fay - jfay@glosdioc.org.uk 01452 835582

- ◆ Leading Worship course
- ◆ Prayer resources

FAITH AND SPIRITUALITY

- ◆ **Foundations in Theology, Ministry and Mission**
- ◆ **The Spirituality Network**
- ◆ **Group Quiet Days**

Foundations in Theology, Ministry and Mission

A one year part-time course ideal for exploring a call to licenced ministry or simply wanting to know more. The learning journey develops biblical study and interpretation and helps connect the Bible and theology to life experiences. Contact Pauline Godfrey for further information.

The Spirituality Network for Gloucestershire

This is an ecumenical informal, network of people who seek to explore, affirm and share a wide variety of spiritual traditions and insights. The network offers individually guided retreats, help in finding a spiritual director and more. They also sponsor the two-year training course in spiritual directing. Contact Liz Palin for further information or go to www.snfglos.org.uk

Group Quiet Days

Department members are available to lead quiet days for parishes, benefices and deaneries. Planning ahead with plenty of notice is advisable. Contact Pauline Godfrey to discuss your hopes and expectations.

Advisor - Faith and Spirituality

Revd Liz Palin - liz.palin@gmail.com 01452 835245

- ◆ Spirituality

Revd Canon Pauline Godfrey - pgodfrey@glosdioc.org.uk 01452 835548

- ◆ Foundations in Theology, Ministry and Mission
- ◆ Coordinate Group Quiet Days

SUPPORT AND DEVELOPMENT

- ◆ **Coaching**
- ◆ **Action Learning Sets**
- ◆ **Strategic Planning Facilitation**
- ◆ **Transition Counselling**
- ◆ **Work Consultancy**

Coaching

Coaching offers thinking space about almost any issue, project or challenge. This is particularly useful when moving into a new role. Diocesan coaches are trained to give you space to think and work out what you might do next. We also have a small number of external coaches who we can recommend, and the cost can be partly covered by the department. Contact Ian Bussell for further information.

Action Learning Sets

An action learning set creates thinking space in a group. They are aimed at those in transition from one role to another, into first incumbency for example, or new parish or diocesan role, but may be available to others – please ask. A new group is formed once there are enough people wanting to join one. They agree how frequently to meet, usually every 4 - 8 weeks, with a trained facilitator to keep the conversation on course. The time to join an action learning set is when you are aware that things will be changing and the peer support and thinking space would be valuable. Contact Ian Bussell for further information.



Strategic Planning Facilitation

If you are planning an away day with your churches or leadership team, to develop a long term plan, we can offer help with preparation and/or facilitation on the day. We can also support the creation of benefice/parish profiles. Contact Andrew Braddock to discuss possibilities.

Transition in Ministry Counselling

For clergy at all stages of ministry who are considering a change of role and are undecided or feeling 'stuck' in their current situation.

We have a working relationship with Christine Blackie, a career counsellor from the Diocese of St Albans, who provides the counselling. The cost can be partly paid by the department. You may have an initial conversation with Christine, (01727 812673, christine.blackie@gmail.com), or contact Ian Bussell.

Work Consultancy

Similar to coaching, work consultancy is with an independent coach to help you think through your working patterns or challenges. The cost can be partly paid by the department.

Contact Ian Bussell for further information.

Advisors - Support and Development

The Revd Canon Ian Bussell - ibussell@glosdioc.org.uk 01452 835545

- ◆ Personal development for all clergy
- ◆ Transition counselling
- ◆ Provision of coach and mentoring

The Revd Canon Dr Andrew Braddock - abraddock@glosdioc.org.uk
01452 835549

- ◆ Strategic Planning Facilitation

MORE RESOURCES AND WHO TO CONTACT

Chaplaincy amongst Deaf and Hard of Hearing People

The Revd Steve Morris - smorris@glosdioc.org.uk 01452 720985

- ◆ Support and care to the Deaf Community
- ◆ Access for people with any form of hearing loss in church

Civil Protection

The Revd Peter Cheesman - pcheesman@glosdioc.org.uk 01452 740533

- ◆ Community Resilience
- ◆ Major incident response - training and coordination

Discipleship and Every Day Faith

The Revd Canon Pauline Godfrey - pgodfrey@glosdioc.org.uk 01452 835548

- ◆ Setting God's People Free
- ◆ Pastoral Assistants
- ◆ Ministry Experience Scheme

Environmental

The Revd Arthur Champion - championarthur@googlemail.com 01242 870402

- ◆ Environmental policy. Eco Church and Eco Diocese award schemes.
- ◆ Gloucestershire Churches Environmental Justice Network (GCEJN)

Ecumenical

The Revd Jacqui Hyde - revdjacqui@talktalk.net 01452 713421

- ◆ Local Ecumenical Co-operative schemes (including LEPs)
- ◆ Shared worship and use of buildings across denominations

Inter-Faith

The Revd Simon Howell - pioneer@stroudparishchurches.org.uk 01453 350387

- ◆ Indigenous religion to new religious movements.

Ministerial Development

The Revd Canon Ian Bussell - ibussell@glosdioc.org.uk 01452 835545

- ◆ Ministerial development for all clergy
- ◆ Support curates and training incumbents

Ministry of Ordained Women

The Revd Clare Edwards - revclareedwards@gmail.com

- ◆ Full inclusion of women in ordained ministry

Minority Ethnic Anglican Concerns

The Revd Dr Suki and Ade Osunsanmi - osunsanmi@doctors.org.uk

- ◆ Enabling equality for all and valuing the richness of diversity

Reader Ministry

The Revd Ann Sargent - asargent@glosdioc.org.uk 01452 835547 (warden)

Natasha Kent - nkent@glosdioc.org.uk 01452 835544 (registrar)

- ◆ Selection, training and ongoing development

Social Responsibility and Inclusion

The Revd Cate Williams - cwilliams@glosdioc.org.uk 01452 835543

- ◆ Evangelism (in partnership with the Church Army Centre of Mission)
- ◆ Pioneer ministry and Fresh Expressions

To Borrow

Grave Talk - Conversation cards to help people talk about death and dying. Multiple copies available. Contact Pauline Godfrey.

Human Sexuality - Books of varying views to aid conversations about scripture, mission and human sexuality. Multiple copies available. Contact Pauline Godfrey.

Prayer Labyrinths - A canvas labyrinth for indoor use only and the rope labyrinth which can be used either indoors or outdoors. Both are available to hire for £40. Contact Julie O'Keefe jo'keefe@glosdioc.org.uk 01452 835554

THE DIOCESE OF GLOUCESTER VISION 2017-2022

Life

*"I have come that they may have life,
and have it to the full"*

JOHN 10:10