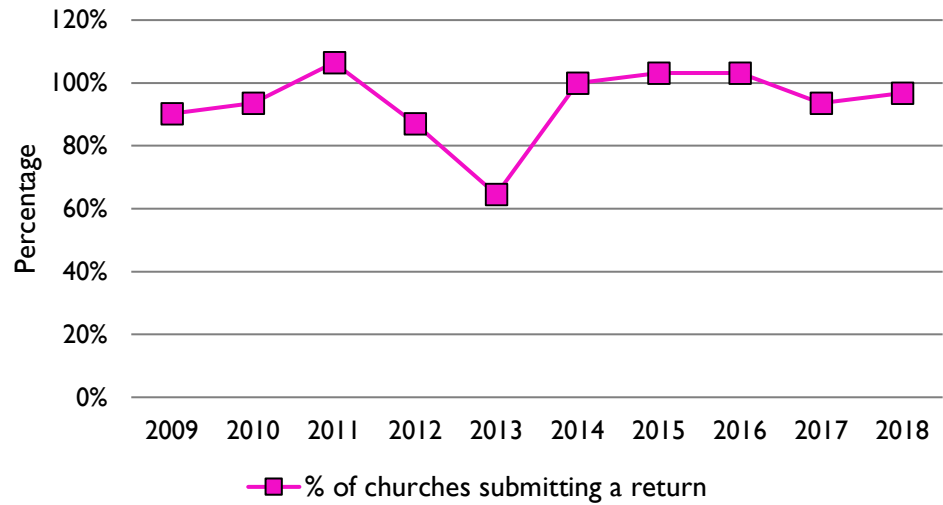
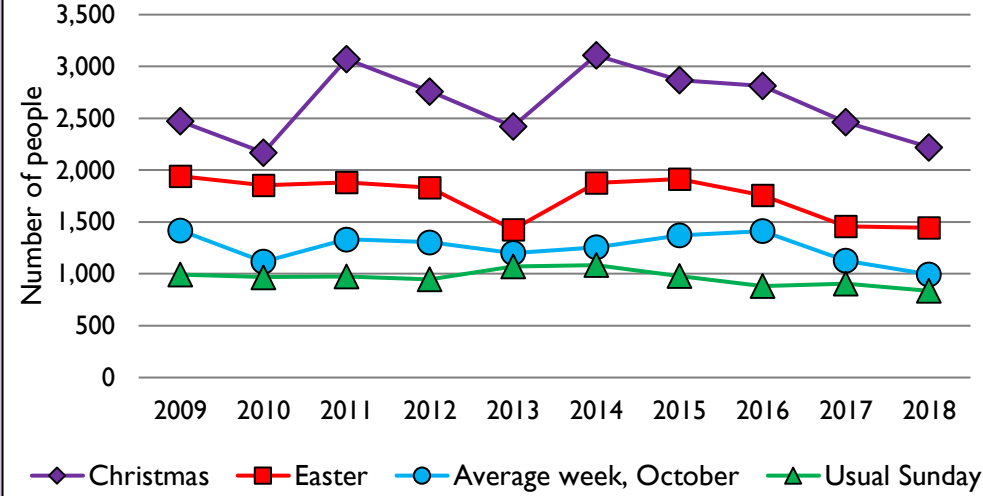


Statistics for Mission dashboard for the Deanery of FOREST, SOUTH in the Diocese of Gloucester

1. Statistics for Mission response rate, 2009-18



2. Attendance summary, 2009-18



Deanery census summary

Deanery population (2011): 60548

	Deanery	Diocese	National
% aged 0-17	20%	20%	21%
% aged 18-44	30%	33%	37%
% aged 45-64	30%	28%	25%
% aged 65 & over	20%	19%	16%
% Christian	65%	64%	59%
% non-Christian religion	1%	2%	9%

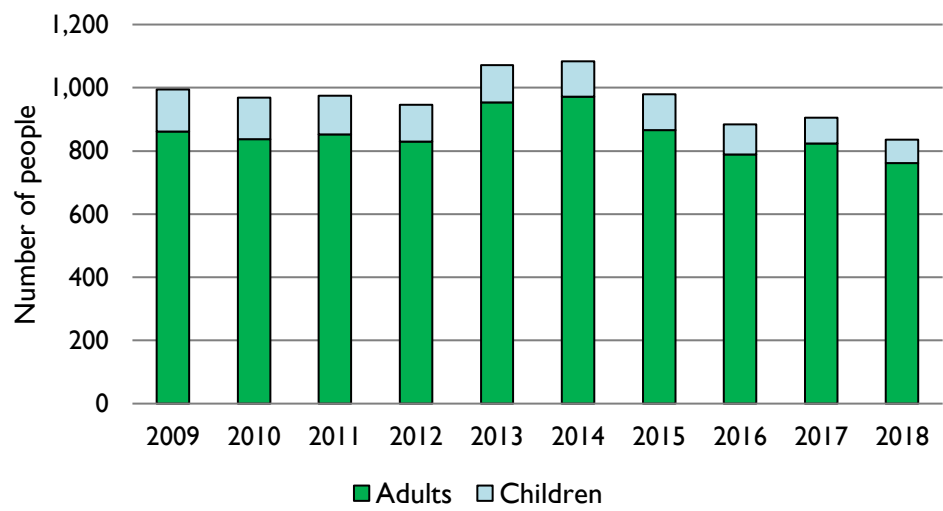
For more detailed census information: see <http://arcg.is/1RaS4CS>
<https://www.churchofengland.org/researchandstats>

Number of churches in deanery (2019): 31

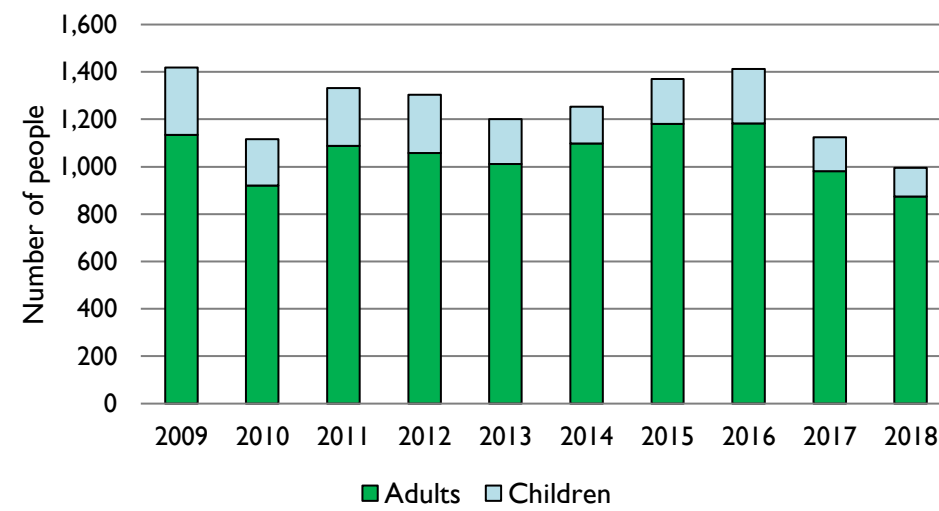
Deanery code: 16104

Number of parishes in deanery (2019): 19

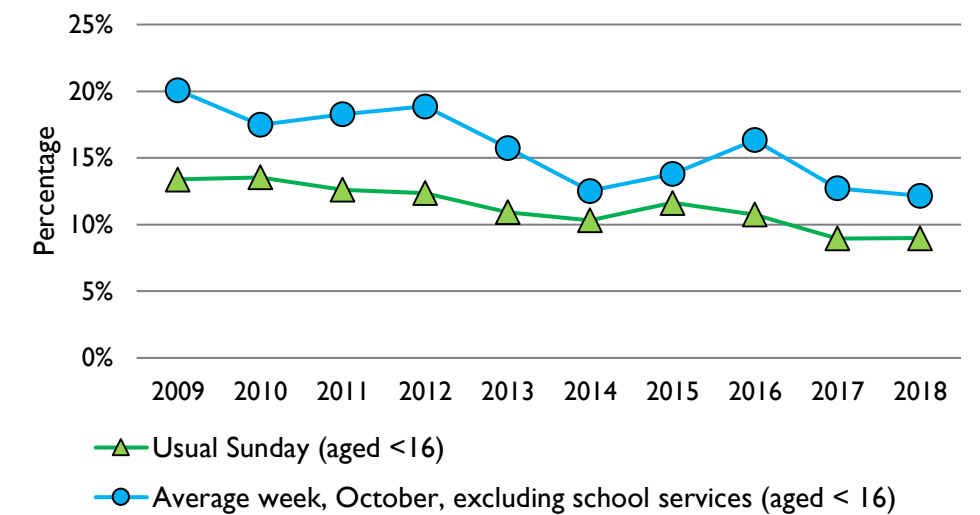
3. Usual Sunday attendance, 2009-18



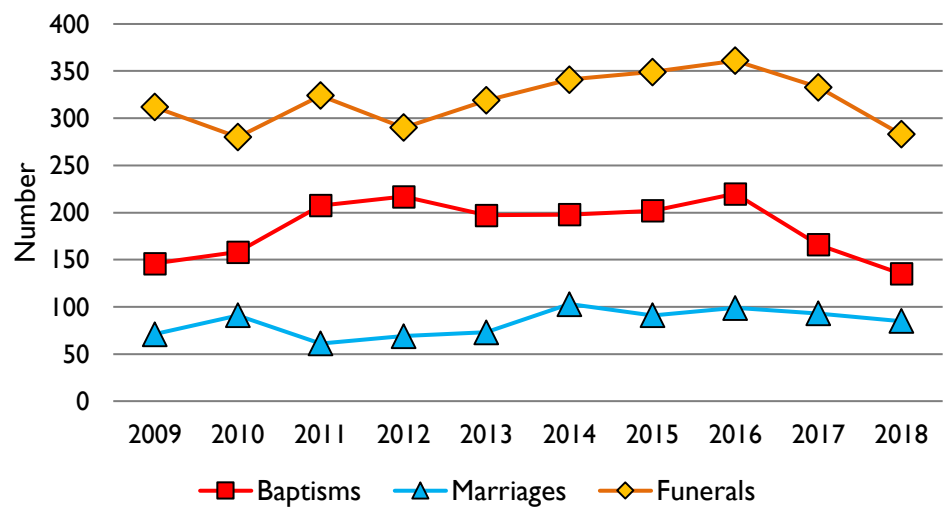
4. Average weekly attendance, October, 2009-18



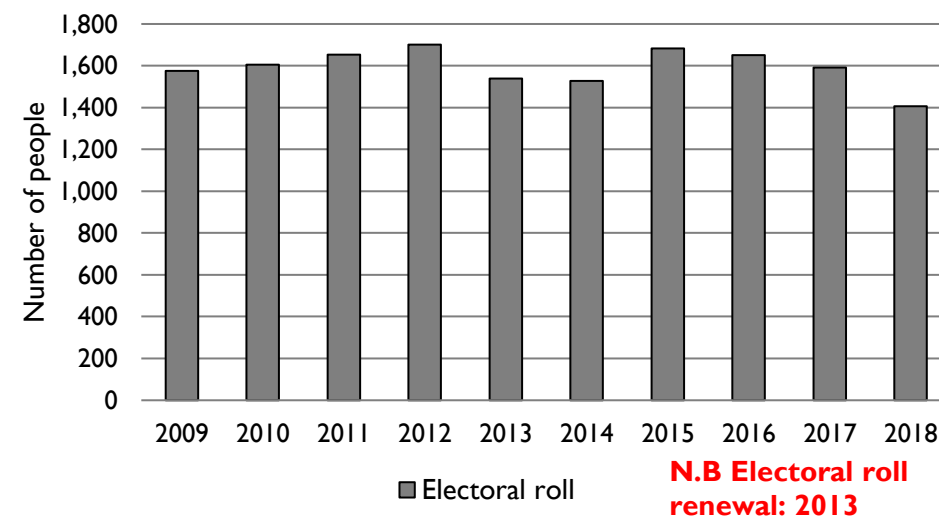
5. Percentage children, 2009-18



6. Baptisms, marriages, & funerals, 2009-18



7. Electoral roll, 2009-18



This dashboard contains figures for churches currently in the deanery, and closed churches that were previously in the deanery. It includes **submitted figures & estimates** for churches that did not submit returns.

Attendance statistics: taken from annual Statistics for Mission returns.

Average weekly attendance: attendance at Sunday and midweek church services & fresh expressions in October; Figs 2, 4 & 5 do not include attendance at services for schools.

Easter: Easter Eve & Easter Day; Christmas: Christmas Eve & Christmas Day.

Baptisms: all baptisms & thanksgivings.

Marriages: marriages and services of prayer & dedication after civil marriages.

Funerals: those held in church & at crematoria/cemeteries.

Census data: taken from the 2011 national Census.

Census statistics have been mapped onto deanery boundaries so are approximations.

For more information, see:

<https://www.churchofengland.org/researchandstats>

Variations in attendance from year to year may be the result of changes in parish/deanery structure, or imperfectly estimated figures for non-reporting churches.

Number of churches that submitted a return: 2009 28; 2010 29; 2011 33; 2012 27; 2013 20; 2014 31; 2015 32; 2016 32; 2017 29; 2018 30.

Produced by the Research and Statistics Unit, Church House, Great Smith Street, London SW1P 3AZ. Date of production: 23/10/19

Every effort has been made to ensure that data are reliable. We would be grateful to be notified of any significant errors or omissions by email to statistics.unit@churchofengland.org



Follow us on Twitter:
@cofestats

