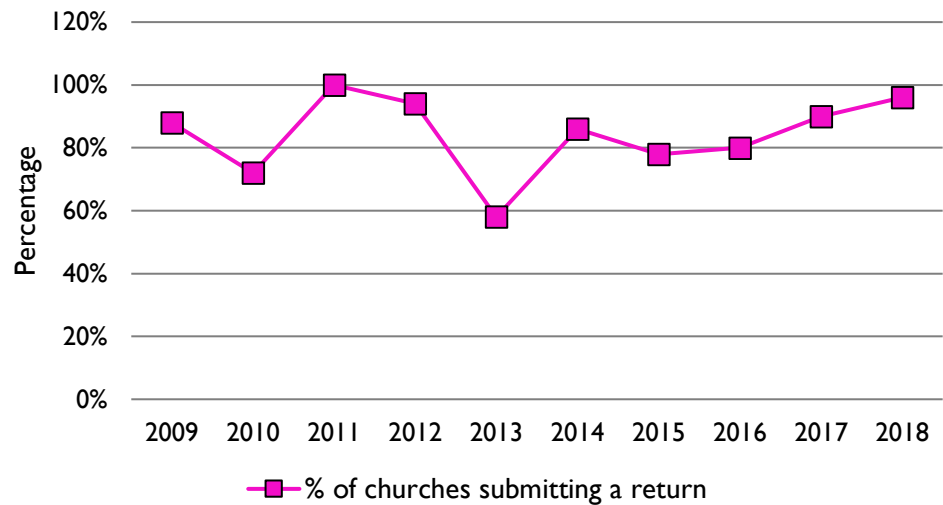
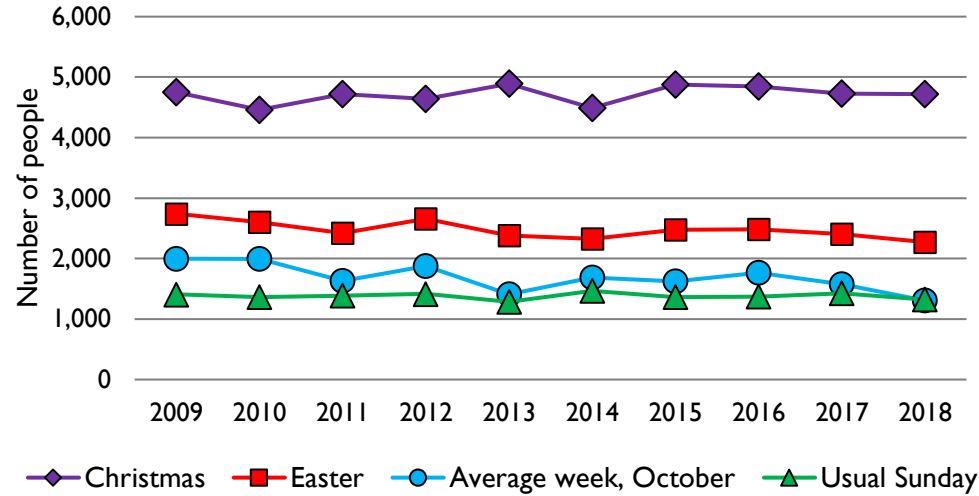


Statistics for Mission dashboard for the Deanery of The Severn Vale Deanery in the Diocese of Gloucester

1. Statistics for Mission response rate, 2009-18



2. Attendance summary, 2009-18



Deanery census summary

Deanery population (2011): 53391

| | Deanery | Diocese | National |
|--------------------------|---------|---------|----------|
| % aged 0-17 | 20% | 20% | 21% |
| % aged 18-44 | 30% | 33% | 37% |
| % aged 45-64 | 29% | 28% | 25% |
| % aged 65 & over | 21% | 19% | 16% |
| % Christian | 68% | 64% | 59% |
| % non-Christian religion | 1% | 2% | 9% |

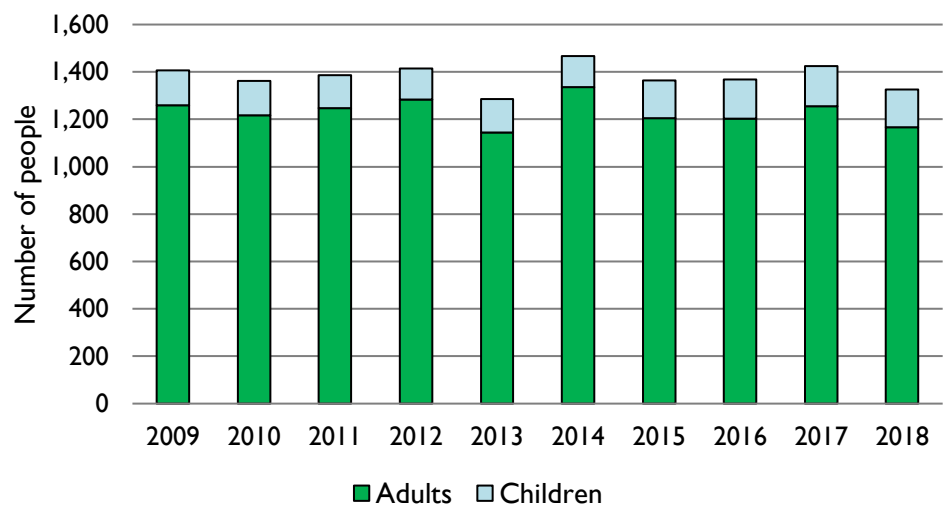
For more detailed census information: see <http://arcg.is/1RaS4CS>
<https://www.churchofengland.org/researchandstats>

Number of churches in deanery (2019): 50

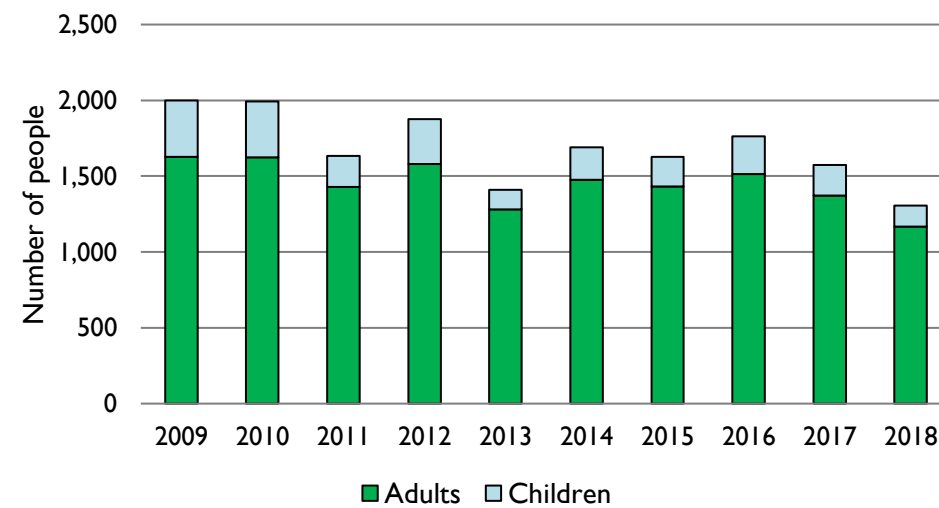
Deanery code: 16112

Number of parishes in deanery (2019): 42

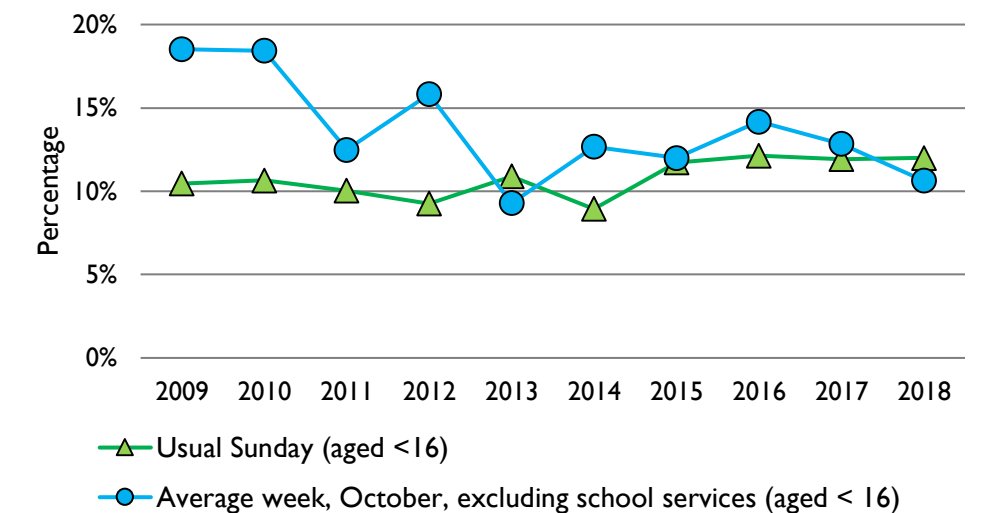
3. Usual Sunday attendance, 2009-18



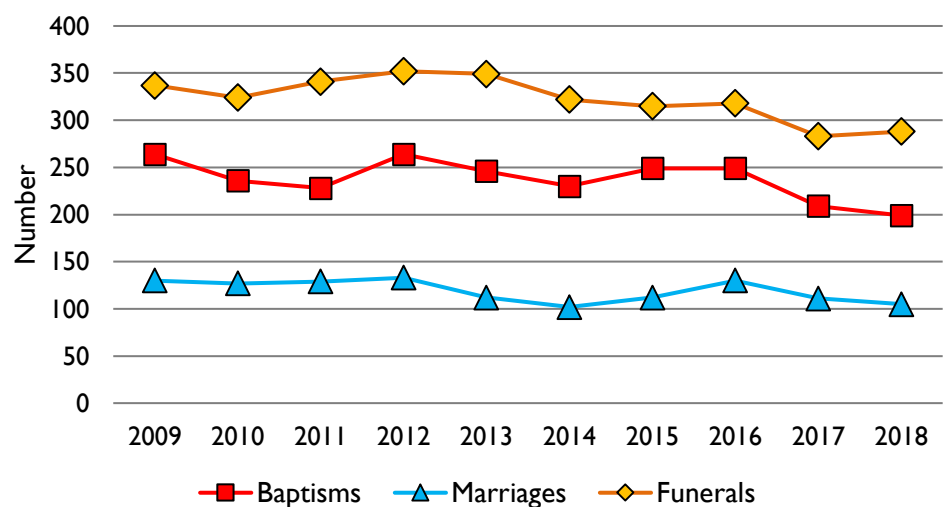
4. Average weekly attendance, October, 2009-18



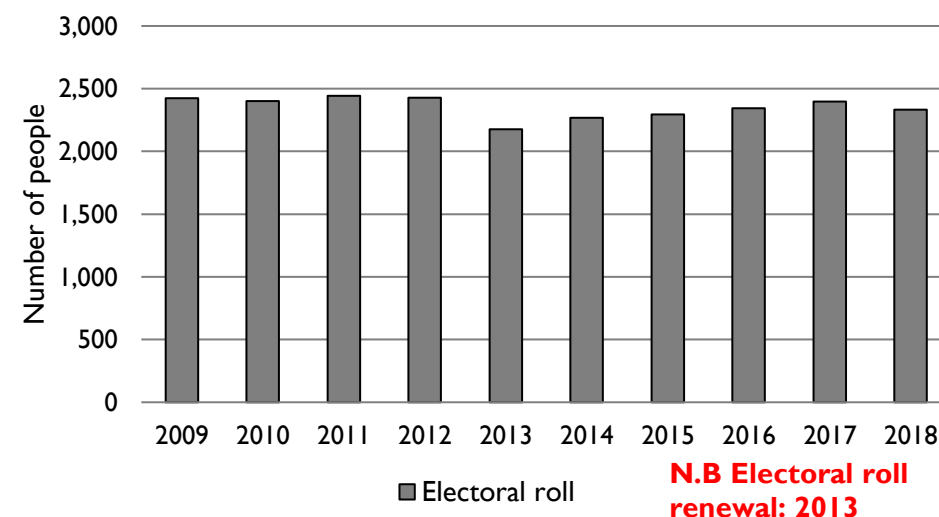
5. Percentage children, 2009-18



6. Baptisms, marriages, & funerals, 2009-18



7. Electoral roll, 2009-18



This dashboard contains figures for churches currently in the deanery, and closed churches that were previously in the deanery. It includes **submitted figures & estimates** for churches that did not submit returns.

Attendance statistics: taken from annual Statistics for Mission returns.

Average weekly attendance: attendance at Sunday and midweek church services & fresh expressions in October; Figs 2, 4 & 5 do not include attendance at services for schools.

Easter: Easter Eve & Easter Day; Christmas: Christmas Eve & Christmas Day.

Baptisms: all baptisms & thanksgivings.

Marriages: marriages and services of prayer & dedication after civil marriages.

Funerals: those held in church & at crematoria/cemeteries.

Census data: taken from the 2011 national Census.

Census statistics have been mapped onto deanery boundaries so are approximations.

For more information, see:

<https://www.churchofengland.org/researchandstats>

Variations in attendance from year to year may be the result of changes in parish/deanery structure, or imperfectly estimated figures for non-reporting churches.

Number of churches that submitted a return: 2009 44; 2010 36; 2011 50; 2012 47; 2013 29; 2014 43; 2015 39; 2016 40; 2017 45; 2018 48.

Produced by the Research and Statistics Unit, Church House, Great Smith Street, London SW1P 3AZ. Date of production: 23/10/19

Every effort has been made to ensure that data are reliable. We would be grateful to be notified of any significant errors or omissions by email to statistics.unit@churchofengland.org



Follow us on Twitter:

@cofestats

